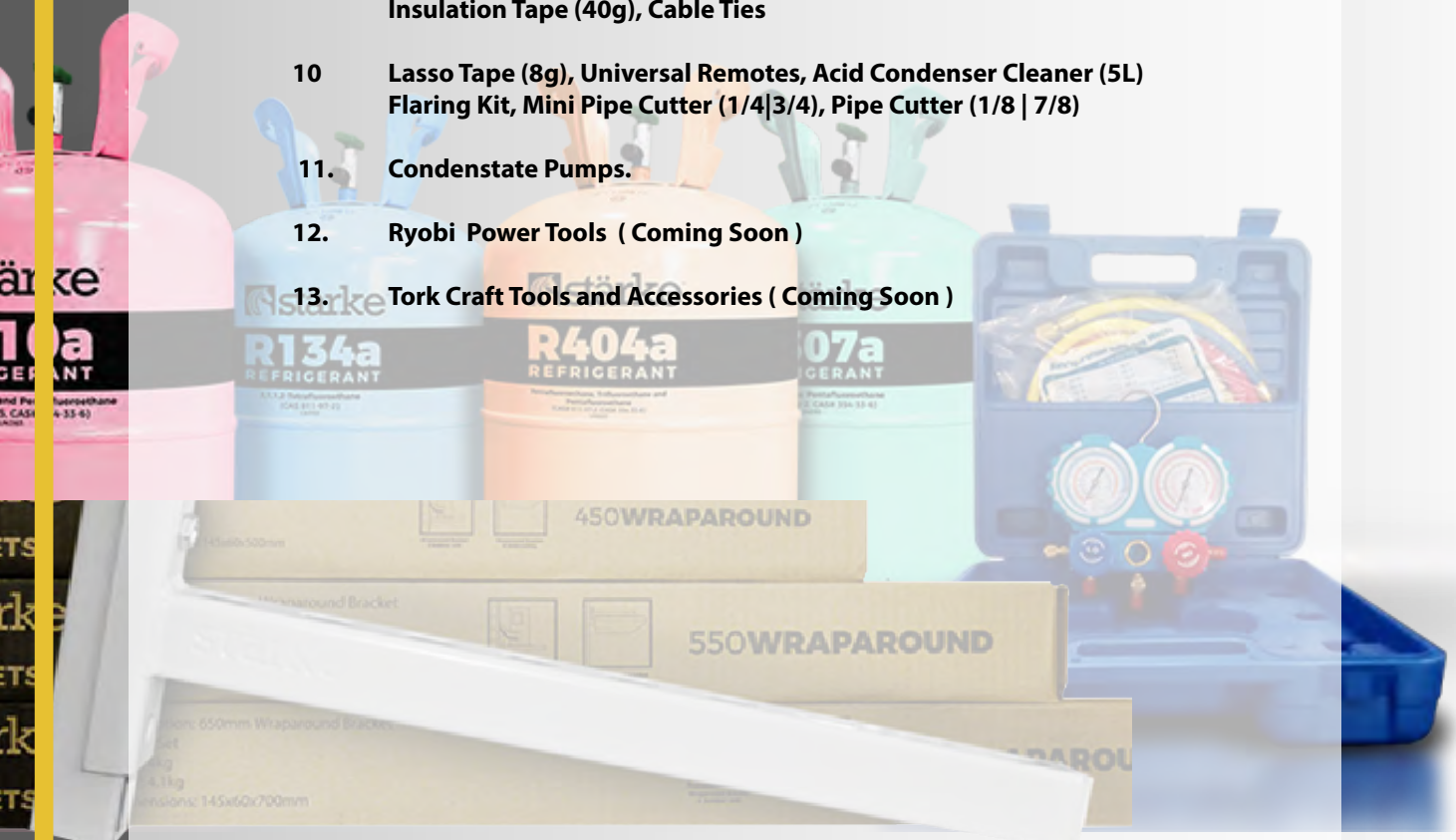


**2022**  
**PRODUCT**  
**CATALOGUE**



# INDEX

- 3 Refrigerator Compressor R134a | R290
- 4 Pencil Driers, Access Valves, Copper Welding Rod, Aluminum Welding Rod (100g) & Flux Powder (250g)
- 5 Disposable Refrigerant Cylinder
- 6 Disposable Refrigerant Can, Can Tap Valve ( CT-341), Mapp Gas & Mapp Torch
- 7 Wrap Around Brackets
- 8 Aluminum Piping 3003, Copper Installation Kits Insulation Flexx, Spring Benders
- 9 Trunking & Accessories, Conduit & Accessories, Electrical Cable & Accessories, Plug Top Rubber 3 Pin, Insulation Tape (40g), Cable Ties
- 10 Lasso Tape (8g), Universal Remotes, Acid Condenser Cleaner (5L) Flaring Kit, Mini Pipe Cutter (1/4|3/4), Pipe Cutter (1/8 | 7/8)
- 11. Condensate Pumps.
- 12. Ryobi Power Tools ( Coming Soon )
- 13. Tork Craft Tools and Accessories ( Coming Soon )



# Refrigerator Compressor

R134a | R290



Stärke compressor manufacturing partner is world renowned and has established comprehensive strategic relationships in more than 50 countries and regions worldwide. Our compressors boast high efficiency & reliability low sound & vibration and can be used for refrigerator, freezer, liquor, ice-making machines and other medium and small sized refrigeration machines. Our manufacturing partners comply with ISO9001 standards.

## Range & Specification

### 134a-LBP Technical Data-sheet

Product Code	Model <i>inch</i>	HP <i>cm3</i>	Displacement <i>w</i>	Capacity <i>w/w</i>	COP <i>mm</i>	Height	Displacement <i>(cc)</i>
COMF16/R134a	QD65H	1/6	6.5	168/180	1.1/1.2	176	6.5
COMF15/R134a	QD75H	1/5	7.0	180/195	1.1/1.2	176	7.5
COMF14/R134a	QD91H	1/4	8.0	208/230	1.1/1.2	176	8.0
COMF13/R134a	QD110H	1/3	11.0	320/340	1.1/1.	182	11.0

## Range & Specification

### R290-LBP Technical Data-sheet

Product Code	HP	Displacement <i>cm3</i>	Capacity <i>w</i>	COP <i>w/w</i>	Height
COMF13/R290	1/3	7.0	350	1.3	197

## Packing Dimensions



### Bracket

QD65H  
QD75H  
QD91H  
QD110H

### Total N.W/G.W N.G/W Incl Accessories

7.5kg/8kg  
7.5/8kg  
8kg/8.5kg  
9kg/9.5kg

### Box Dimensions

260\*175\*195mm  
260\*175\*195mm  
260\*175\*195mm  
270\*190\*225mm



**Pencil Driers (15g)**

Product Code : SSP15G  
Description : 15g



**Pencil Driers (25g)**

Product Code : SSP25G  
Description : 25g



**Access Valves (1/4)**

Product Code : SSACV1/4x7MM  
Description : 1/4 | 70cm



**Copper Welding Rod (2mm)**

Product Code : SSCW2MM  
Description : 2mm | 50cm | Cu-Cu  
0% Silver (S-94)



**Copper Welding Rod (3mm)**

Product Code : SSCW3MM  
Description : 3mm | 50cm | Cu-Cu  
0% Silver (S-94)



**Silver Solder Rods (1.5mm)**

Product Code : SSSS207/2  
Description : 1.5mm | 25cm | Flux Coated  
20% Silver (2009U)



**Aluminum Welding Rod (100g)**

Product Code : SSAWR100/R  
Description : 100g | 2.0mm | 6m  
Al-Al | Al-Cu | Flux in centre



**Flux Powder (250g)**

Product Code : BRFPJ/250G  
Description : 250g

# Disposable Refrigerant Cylinder

Liquefied Gas | Non-Refillable | Disposable Cylinder



Starke refrigerant gas is produced with the highest quality and standards. Purity is monitored and tested on every batch. A refrigerant is a substance or mixture, usually a fluid, used in a heat pump and refrigeration cycle. In most cycles it undergoes phase transitions from a liquid to a gas and back again.



## Range & Sizes

Product Code	Type	Size (kg)	Packaging	Chemical name
SSRER134a	R134a	13.6kg	Disposable Cylinder	Tetrafluoroethane
SSRER404a	R404a	10.9kg	Disposable Cylinder	Tetrafluoroethane, Pentafluoroethane
SSRER507a	R507	11.3kg	Disposable Cylinder	Pentafluoroethane Difluoromethane
SSRER600a	R600a	6.5kg	Disposable Cylinder	Isobutane
SSRER22	R22	13.6kg	Disposable Cylinder	Chlorodifluoromethane
SSRER410a	R410a	11.3kg	Disposable Cylinder	Pentafluoroethane Trifluoroethane

## Packing Dimensions



Refrigerant Gas

Estimated G.W  
Gas+Cylinder+Package

Box  
Dimensions

R134a	+/- 16.6kg	42*24*24cm
R404a	+/- 14.4kg	42*24*24cm
R507	+/- 14.6kg	42*24*24cm
R600a	+/- 9.6kg	42*24*24cm
R22	+/- 16.6kg	42*24*24cm
R410a	+/- 15.4kg	42*24*24cm

# Disposable Refrigerant Can

Liquefied Gas | Non-Refillable | Disposable Can



## Range & Sizes

Product Code	Type	Weight (g) (Gas/ Gas+ Can)	Can Tap Valve (Thread)	Packaging	Chemical name
SSRER410G	R410a	800g/ 1.2g	Can Tap included	Disposable Can	Tetrafluoroethane
SSRER600G	R600a	420g/600g	7/16" - 28 ubf Thread	Disposable Can	Isobutane
SSRER134G	R134a	800g/ 1kg	7/16" - 28 ubf Thread	Disposable Can	Difluoromethane, Pentafluoroethane

## Packaging Weights & Dimensions (12 in a Case)



Refrigerant Gas

Estimated G.W  
12 Cans+Gas+Case

Case  
Dimensions

**R410a**  
**R134a**  
**R600a**

+/- 15.8kg  
+/- 12.6kg  
+/- 8.0kg

320 \*240\*350mm  
320\*235\*270mm  
320\*235\*270mm

**Can Tap Valve ( CT-341 )**

Product Code : SSVT/R134a  
Description : 7/16" - 28 ubf Thread

**Mapp Gas**

Product Code : SSMAPG/C  
Description : 16.00z/453.6g

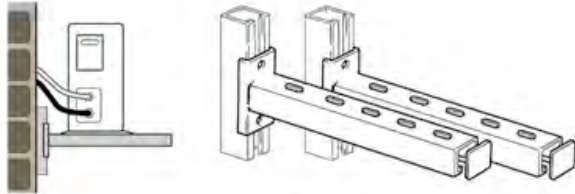
**Mapp Torch**

Product Code : SSMAPG/T  
Description : Temperature 1400 °c  
w/ Igniting Switch

# Wrap Around Brackets

450mm | 550mm | 650mm

Cantilever



Product Code	Brackets	Weight Supported (Load per set)	Main Arm		Back Plate/Strut (Dimension)	Back Plate/Strut (Thickness)
			(Dimension)	(Thickness)		
BRA00450/WA	450 Wrap Around	150kg	450*40*40mm	2.0mm	200*40*40mm	1.7mm
BRA00550/WA	550 Wrap Around	180kg	550*40*40mm	2.0mm	250*40*40mm	1.7mm
BRA00650/WA	650 Wrap Around	200kg	650*40*40mm	2.0mm	300*40*40mm	1.7mm

## Accessories included in box

Rawl Bolts | Bolts | Nuts | Washers | Front Caps | Anti-vibration | Spring Nuts

Rawl Bolt Size/Qty	Bolts Size/Qty	Nuts Size/Qty	Washers Size Qty	Front Caps Size/Qty	Anti-Vibration Size/Qty	Spring Nuts Qty
M10/4	M10/4	M10/4	M10/4	2	2	4

## Packing Dimensions (Each)

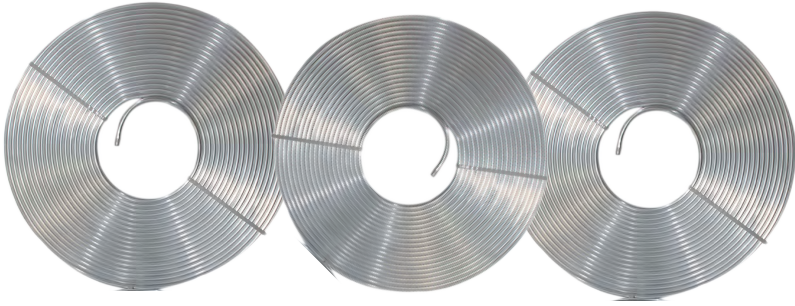


Bracket (Each)	Total N.W/G.W Incl Accessories	Box Dimensions
450Wrap Around	2.6kg/2.7kg	145*60*500mm
550Wrap Around	3.4kg/3.5kg	145*60*600mm
650Wrap Around	4kg/4.1kg	145*60*700mm

## Packing Dimensions (Case of 6)



Bracket (Case of 6)	Estimated G.W Incl Accessories	Case Dimensions
450Wrap Around	+/- 20.4kg	500*143*60mm
550Wrap Around	+/- 23.0kg	600*145*60mm
650Wrap Around	+/- 25.0kg	680*145*60mm



Starke 3003 Aluminium is a popular alloy that offer excellent atmospheric corrosion resistance and strength. Unlike other aluminium alloys, Starke 3003 Aluminium is weldable by conventional welding methods. It also takes well to cold and hot temperatures and has generally better mechanical properties when compared to 100 series aluminium alloys.

## 25m Aluminum Piping (Pancake)

Product Code	: SSA1424/T
Description	: 1/4 inch (6.350mm)   1.0mm
Product Code	: SSA3825/T
Description	: 3/8 inch (9.525mm)   1.0mm
Product Code	: SSA1225/T
Description	: 1/2 inch (12.700mm)   1.2mm
Product Code	: SSA3825/T
Description	: 3/8 inch (9.525mm)   1.0mm
Product Code	: SSA5850/T
Description	: 5/8 (15.875mm)   1.2mm
Product Code	: SSA3825/T
Description	: 3/4 (19.050mm)   1.2mm

### General Specification

Length : 25m  
 Aluminium Grade : 3003  
 Burst Pressure : 10Mpa ( 1450.38psi)  
 Application: Ideal for HVAC&R



## 3m Copper Installation Kits

Product Code	: SS14x38x3 INSK
Description	: 1/4 (6.350mm)   3/8 (9.525mm)
Product Code	: SS14x12x3 INSK
Description	: 1/4 (6.350mm)   1/2 (12.70mm)
Product Code	: SS14x58x3 INSK
Description	: 1/4 (6.350mm)   5/8 (15.875mm)
Product Code	: SS38x58x3/INSK
Description	: 3/8 (6.350mm)   5/8 (15.875mm)

### General Specification

Length : 3m (Insulated)  
 Application: Suitable for R410a, Mid-Midwall Split, back to back installation.



## Insulation Flexx

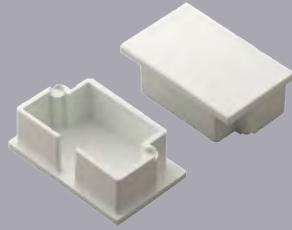
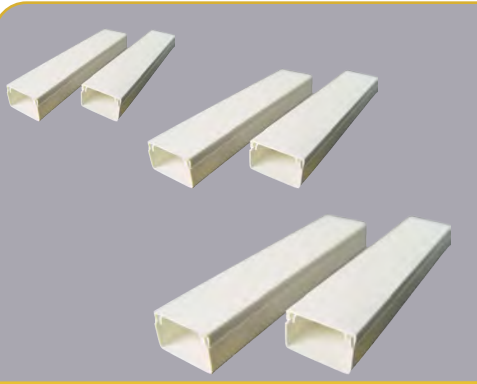
Product Code	: SS14x14/I
Description	: 1/4 (Pipe) x 1/4 (Wall)   Length 1.8m
Product Code	: SS12x14/I
Description	: 1/2 (Pipe) x 1/4 (Wall)   Length 1.8m
Product Code	: SS38x14/I
Description	: 3/8 (Pipe) x 1/4 (Wall)   Length 1.8m
Product Code	: SS58x14/I
Description	: 5/8 (Pipe) x 1/4 (Wall)   Length 1.8m
Product Code	: SS58x38/I
Description	: 5/8 (Pipe) x 3/8 (Wall)   Length 1.8m
Product Code	: SS34x38/I
Description	: 3/4 (Pipe) x 3/8 (Wall)   Length 1.8m



## Spring Benders

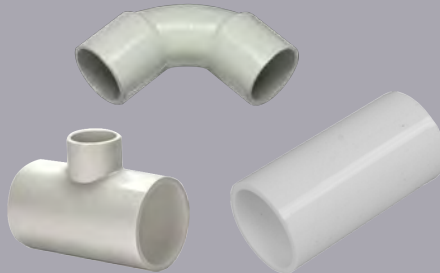
Product Code	: SSPB1/4
Description	: Pipe Bender
Product Code	: SSPB1/2
Description	: Pipe Bender
Product Code	: SSPB3/8
Description	: Pipe Bender
Product Code	: SSPB3/4
Description	: Pipe Bender
Product Code	: SSPB5/8
Description	: Pipe Bender





## Trunking & Accessories

Product Code	: SST16x16/2m
Description	: 16mm*16mm 2m
Product Code	: SST40x40/3m
Description	: 40mm*40mm 3m
Product Code	: SST100x40/3m
Description	: 100mm*40mm 3m
Product Code	: SSC100X40/C
Description	: 100mm*40mm



## Conduit & Accessories

Product Code	: SSC20X4/C
Description	: 4m   Conduit
Product Code	: SSCEL20/C
Description	: 20mm   Elbow
Product Code	: SSCT20mm/C
Description	: 20mm   Tee
Product Code	: SSCOU20/C
Description	: 20mm   Coupler



## Electrical Cable & Accessories

Product Code	: SSCA1.53C/100w
Description	: 1.5mm*100m   White (3 Core)
Product Code	: SSCA1.53C/20m
Description	: 1.5mm*20m   White (3 Core)
Product Code	: SSCA1.55C/100b
Description	: 1.5mm*100mm   Black (5 Core)



## Plug Top Rubber 3 Pin

Product Code	: SSPTRB/3P
Description	: 3 Pin plug



## Insulation Tape (40g)

Product Code	: SSCW3MM
Description	: 40g   30m
Available in White & Black	



## Cable Ties

Product Code	: SSCTT50R/100
Description	: 12g   20cm



**Lasso Tape (8g)**

Product Code : SSCW2MM  
Description : 8g | 20mm



**stärke**

**Universal Remotes**

Product Code : SSURKT4000  
Description : 100g | 12.9cm



**stärke**

**Acid Condenser Cleaner (5L)**

Product Code : SSACV1/4X7G/MM  
Description : 5L



**Flaring Kit**

Product Code : CT-275  
Description : 1080g | 32cm | 14cm



**Mini Pipe Cutter (1/4|3/4)**

Product Code : SSPC14/34  
Description : 1/4 | 3/4



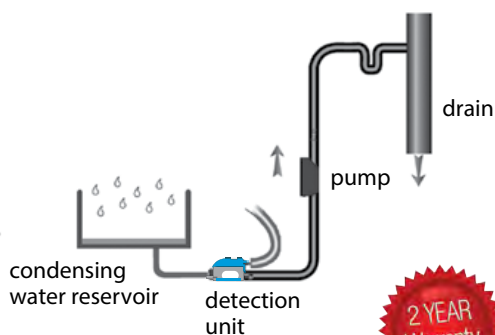
**Pipe Cutter (1/8 | 7/8)**

Product Code : SSPC18/78  
Description : 1/8 | 7/8

# Condensate Pumps

CPS3000

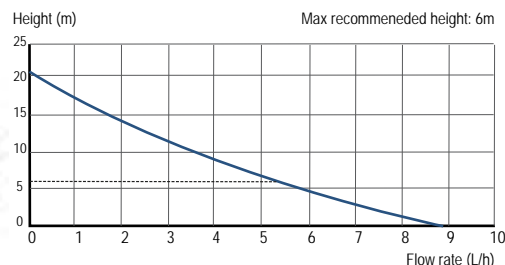
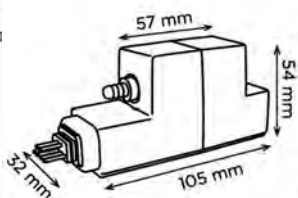
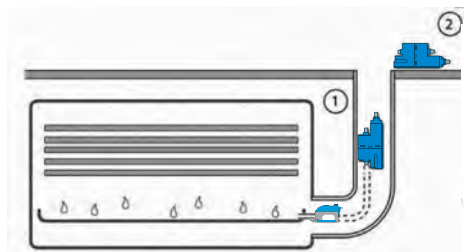
## CPS3000



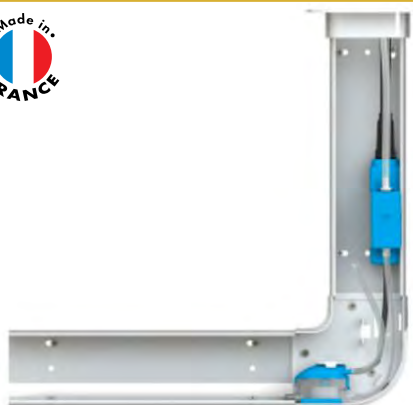
CPS3000 is an air conditioner condensate lift pump. Its small size enables it to fit easily into a wall-mounted air conditioner. CPS3000 operates discreetly without noise disturbance.

### TECHNICAL CHARACTERISTICS

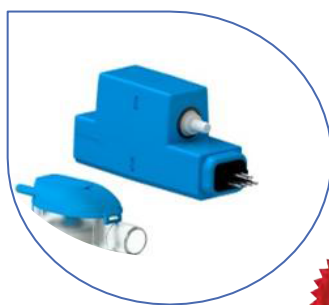
Discharge: 8-10 mm
Motor: 22 Watts/ 0.53A
Voltage: 220-240 V / 50 Hz
Working Water Temp: 35°C
Product Weight: 0.5kg's
Overall Measurements: 104x49.4x28mm
Inlet Pipe Work: 16mm
IP Rating: IP20
Maximum flow rate: 9 l/h (+-15%)
Max discharge height: 6m (recommended)



## CPS3000



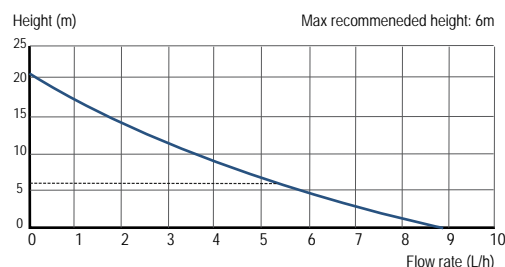
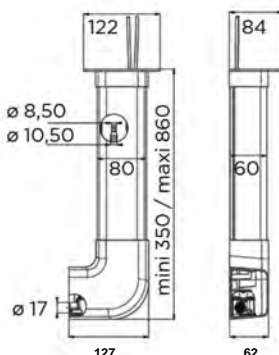
CPS3000 inside



CPS3000 is a ready-to-fit kit containing a condensate lift pump (Clim Mini) and conduit. CPS3000 is specially designed for easy and discrete fitting.


### TECHNICAL CHARACTERISTICS


Discharge: 8-10 mm
Motor: 22 Watts/ 0.53A
Voltage: 220-240 V / 50 Hz
Sound level: 21 dB (A)
Working Water Temp: 35°C (trips at 130°C)
Product Weight: 1.3 kg's
Overall Measurements: 127x360-860 (max)x62mm
Inlet Pipe Work: 16mm
IP Rating: IP20
Maximum flow rate: 9 l/h (+-15%)
Max discharge height: 6m (recommended)







### STORE LOCATIONS

 **MIDRAND:** 011 315 1246  
Units 11, 12 & 13, 14 Kingston Park,  
Old Pretoria Main Road  
Halfway House, Midrand  
1685

 **RANDBURG:** 011 791 1021  
Unit 4, 123 Malibongwe Dr,  
Strijdom Commercial Park  
Randburg, Johannesburg,  
2195

 **PRETORIA:** 012 335 0001  
511 Frederika St  
Trekfred Center  
Gezina, Pretoria  
0031

 **POLOKWANE:** 015 280 0021  
Shop 2 Veldspaat Street,  
Magna via Polokwane,  
0699

### OFFICE HOURS

MON - THURS: 7:30am - 5pm | FRIDAY: 7:30am - 4:30pm | SATURDAY: 8am - 12pm | SUNDAY: Closed | PUBLIC HOLIDAYS: Closed